

WZB

Berlin Social Science Center



Social Inequalities in Europe. Why Worry?

Jutta Allmendinger

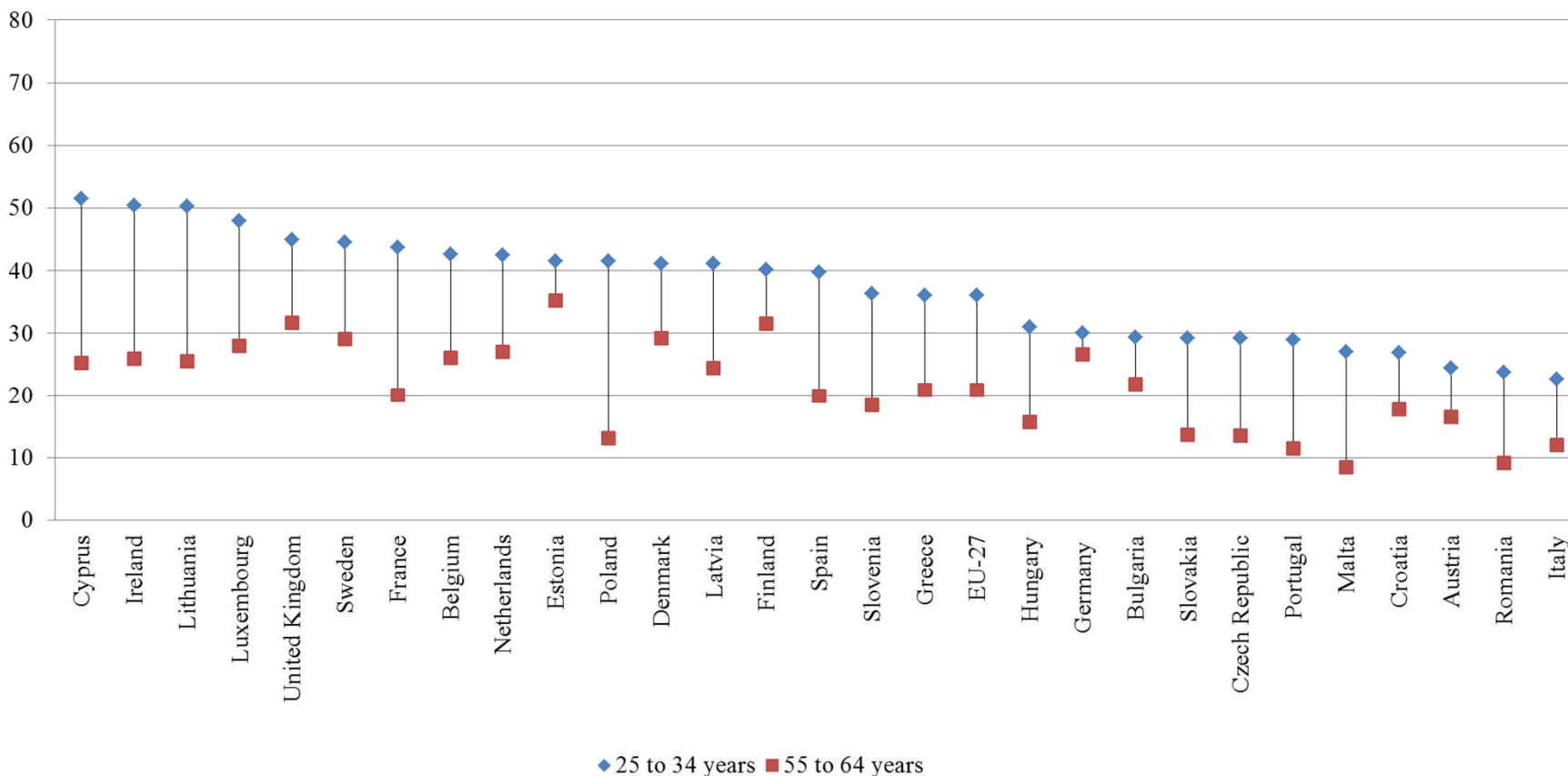
Athens, June 20th 2014



I. Education

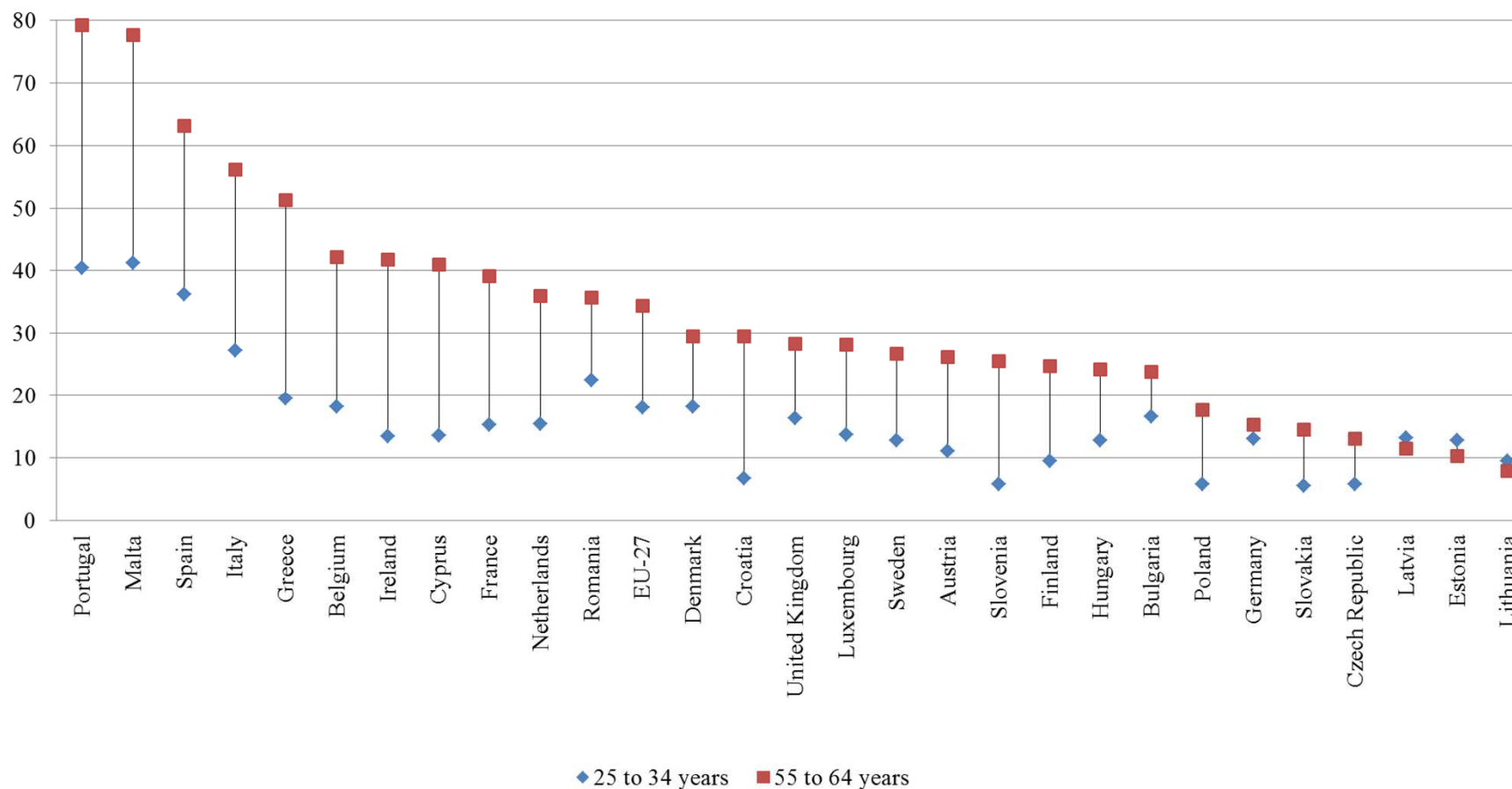


Population with tertiary education attainment, by age group, 2013
(in percent)



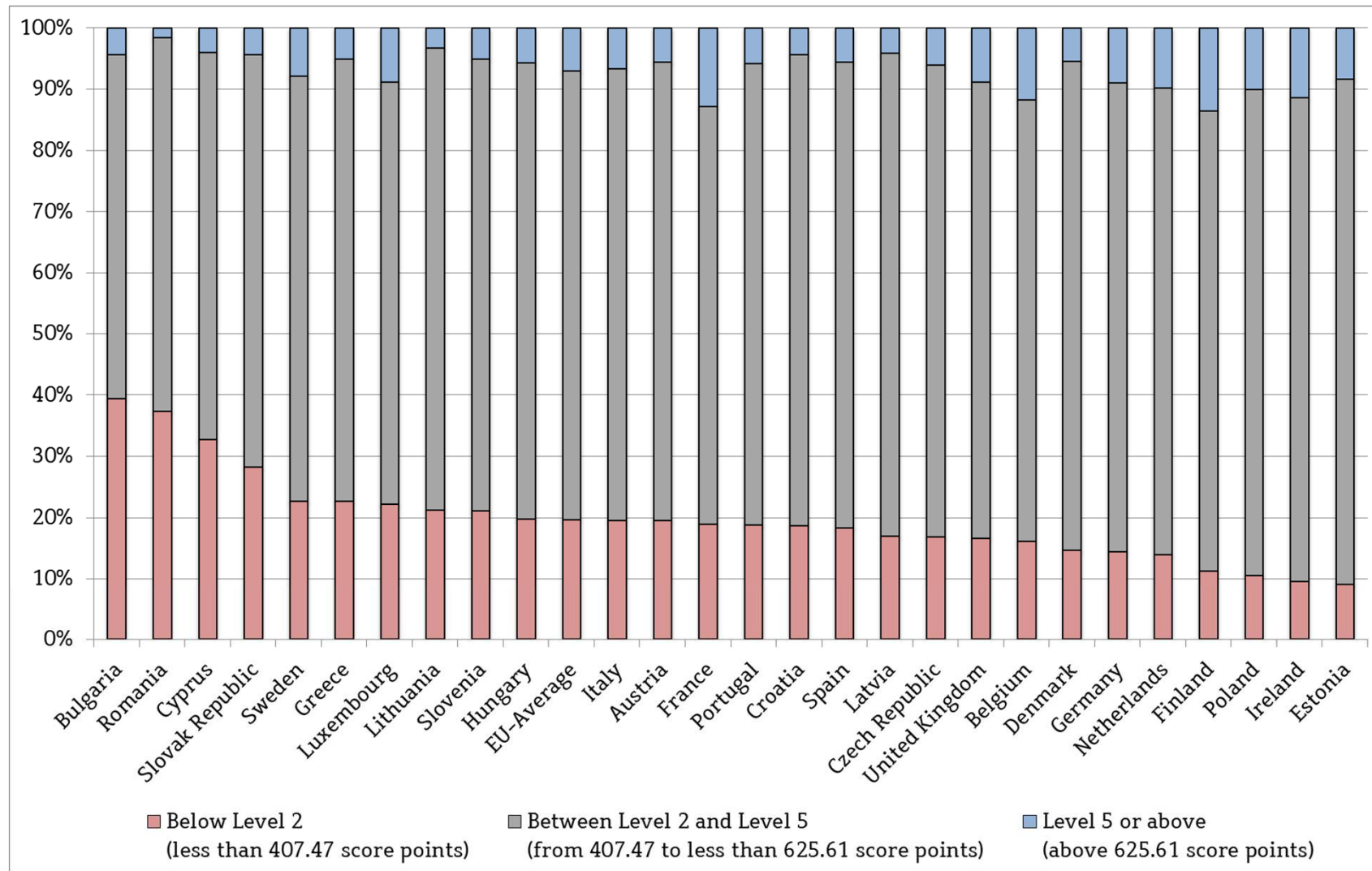


Population without secondary education, by age group, 2013 (in percent)



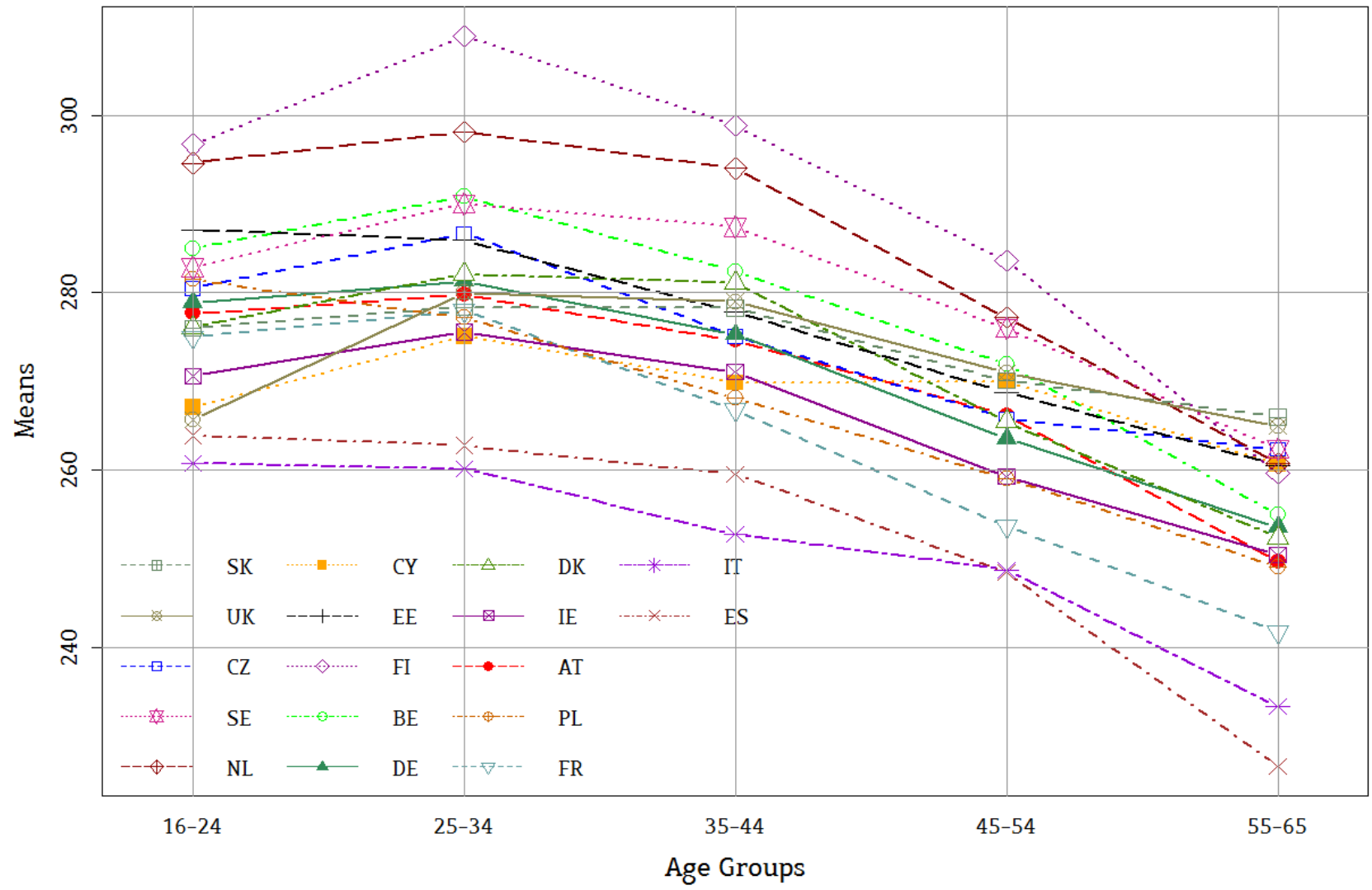


Reading Competences, PISA 2012





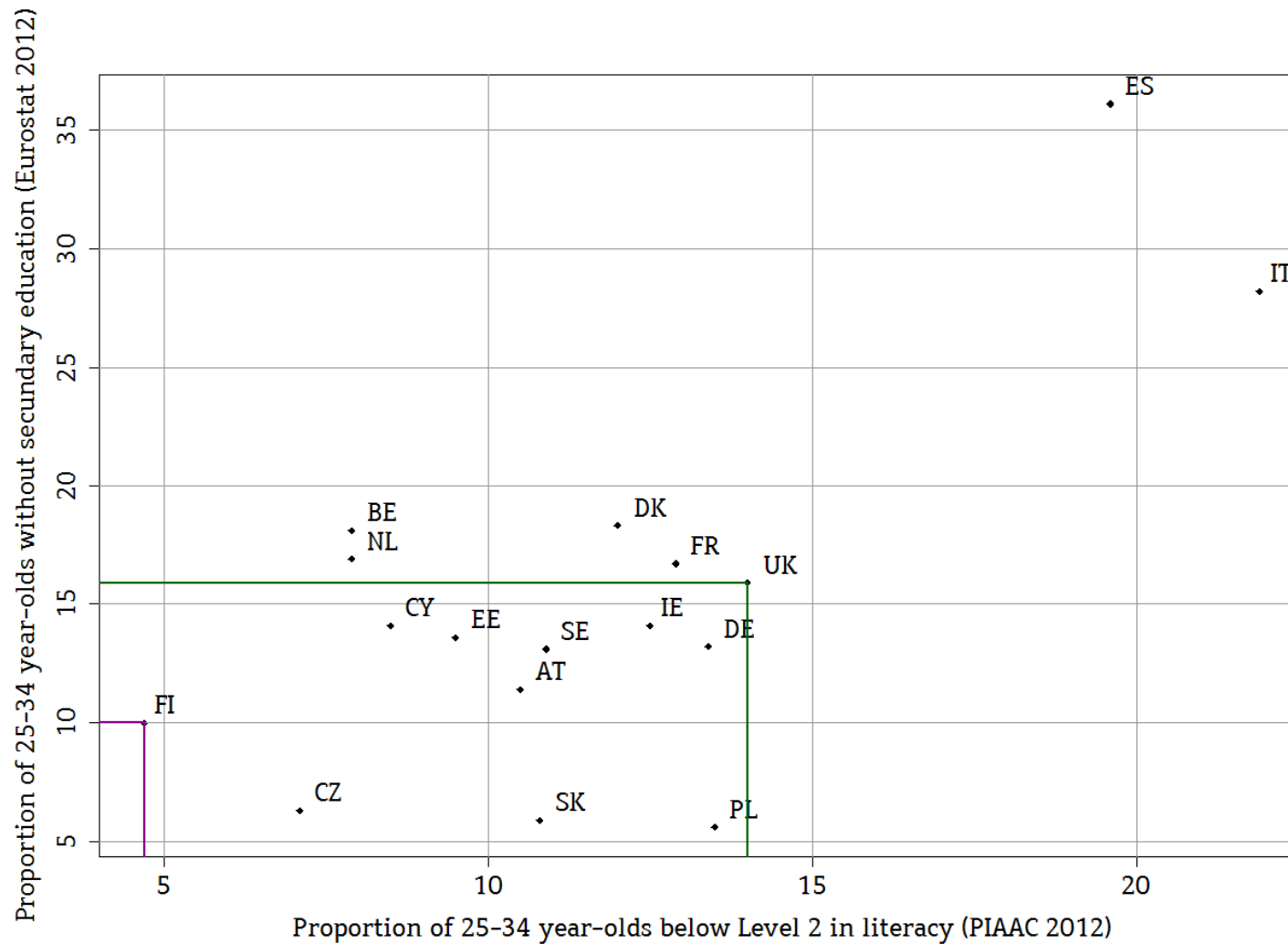
Mean literacy proficiency, by 10-year age groups, PIAAC 2012



Source: OECD, PIAAC 2012 Database.



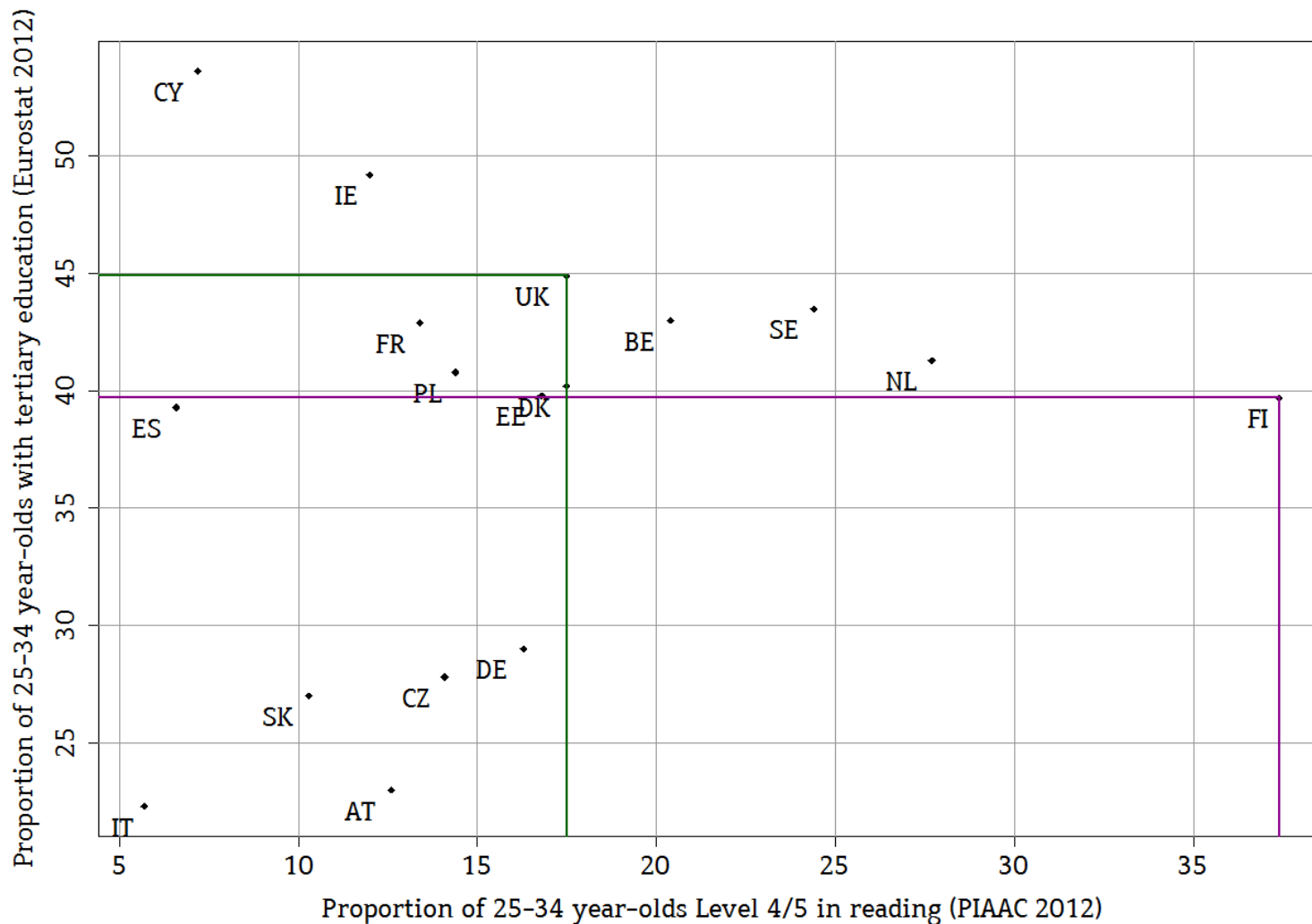
Distribution of low competences (PIAAC) and low certificates, 2012 (in percent)



Sources: Proportion of low competences: OECD, PIAAC 2012 Database.
Proportion of low certificates: Eurostat-Online 2014, EU Labour Force Survey (EU-LFS).



Distribution of high competences (PIAAC) and high certificates, 2012 (in percent)



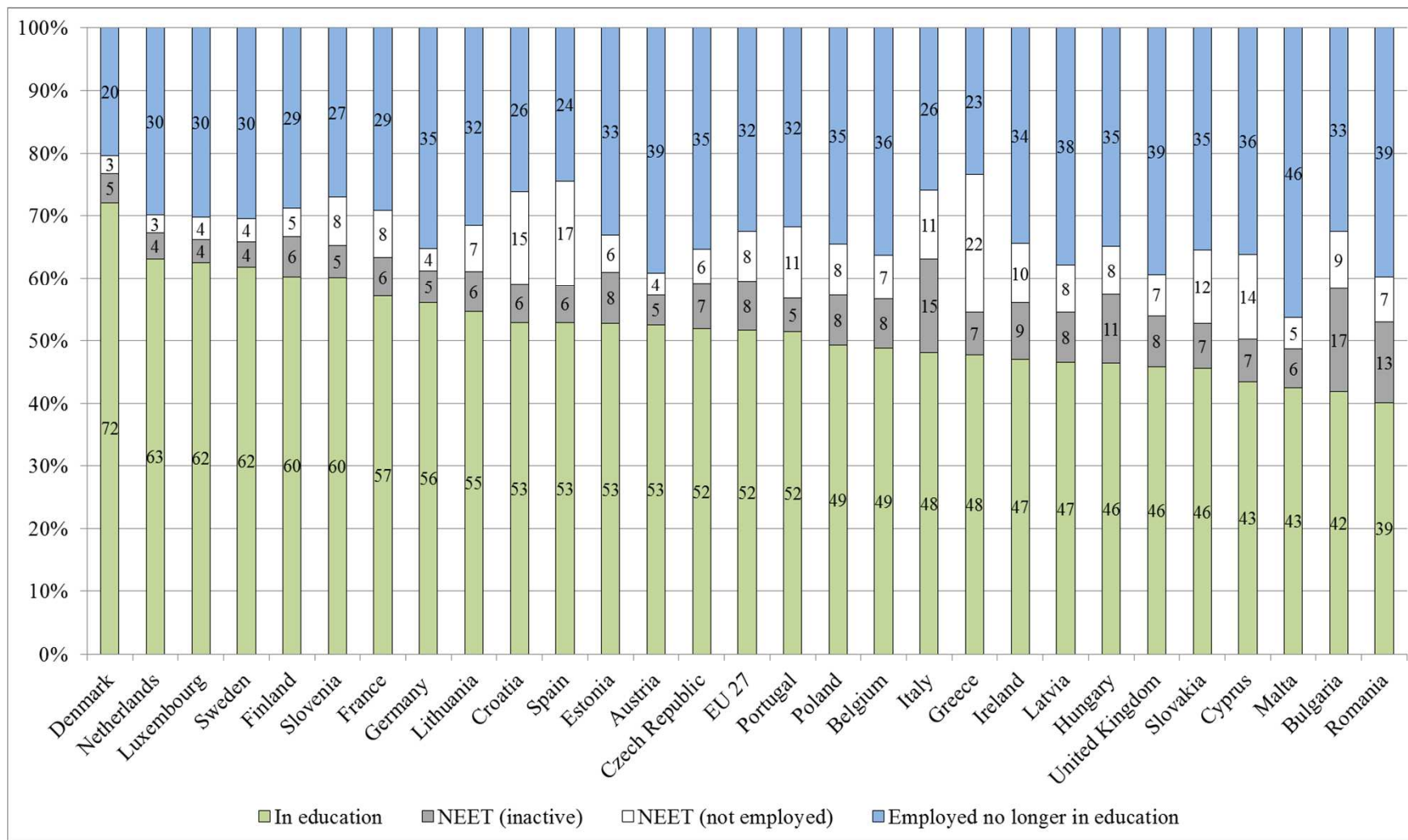
Sources: Proportion of low competences: OECD, PIAAC 2012 Database.
 Proportion of low certificates: Eurostat-Online 2014, EU Labour Force Survey (EU-LFS).



II. Employment



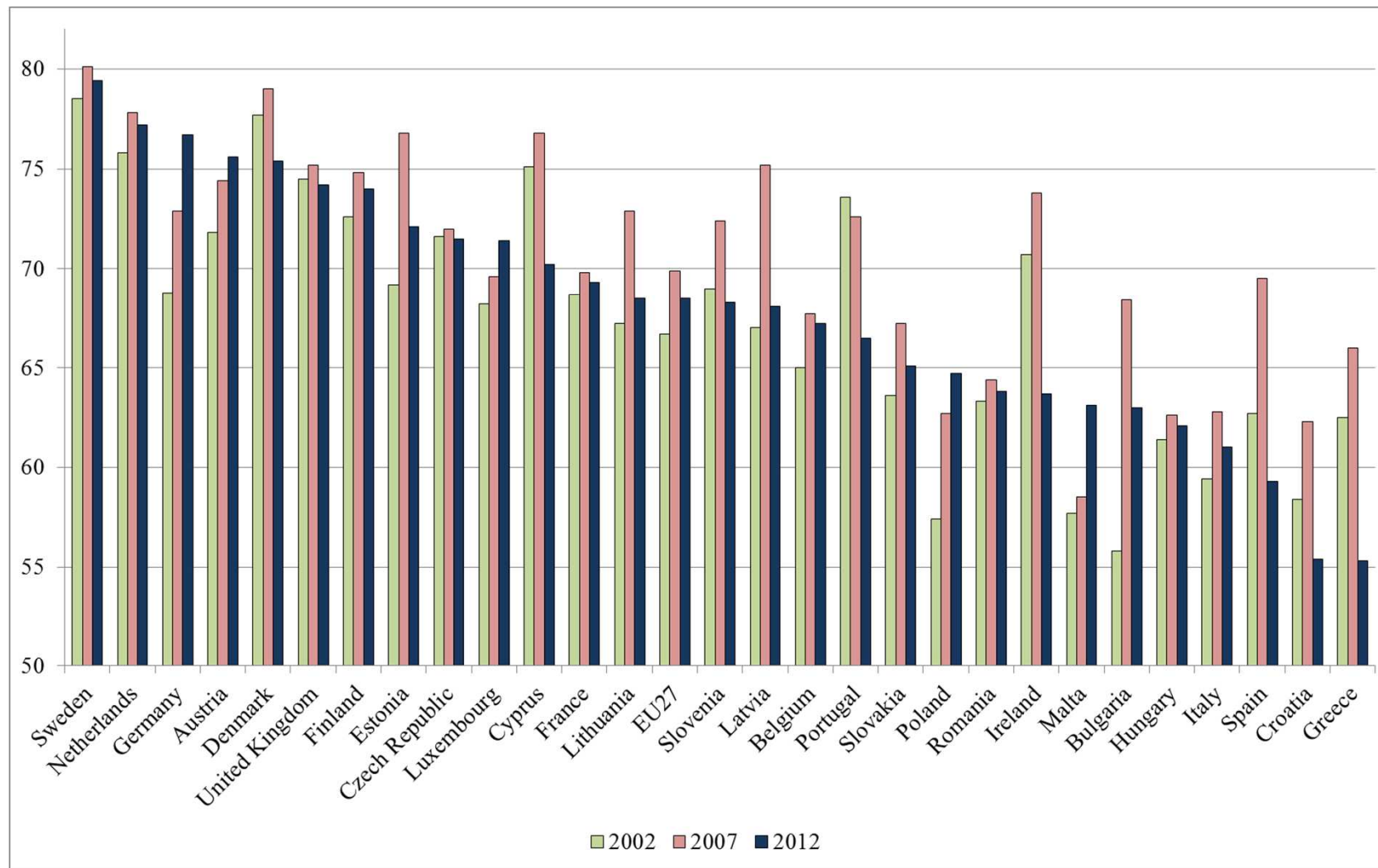
Not in Education, Employment or Training (NEET), 15-29 year-olds, 2013 (in percent)



Source: Eurostat-Online 2014, EU Labour Force Survey (EU-LFS).



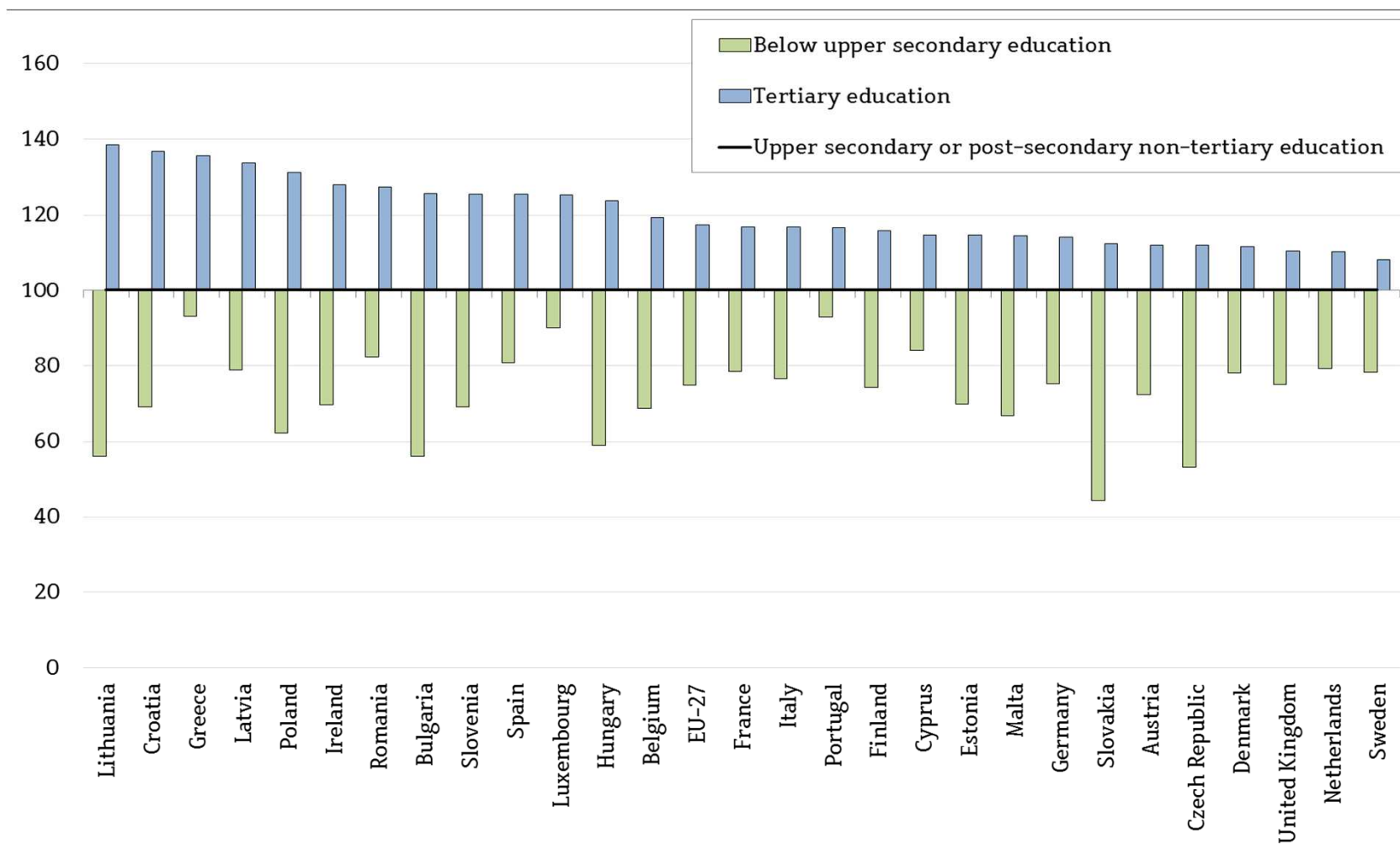
Employment rates of 20-64 year-old workers, 2002, 2007 and 2012 (in percent)



Source: Eurostat-Online 2014, EU Labour Force Survey (EU-LFS).



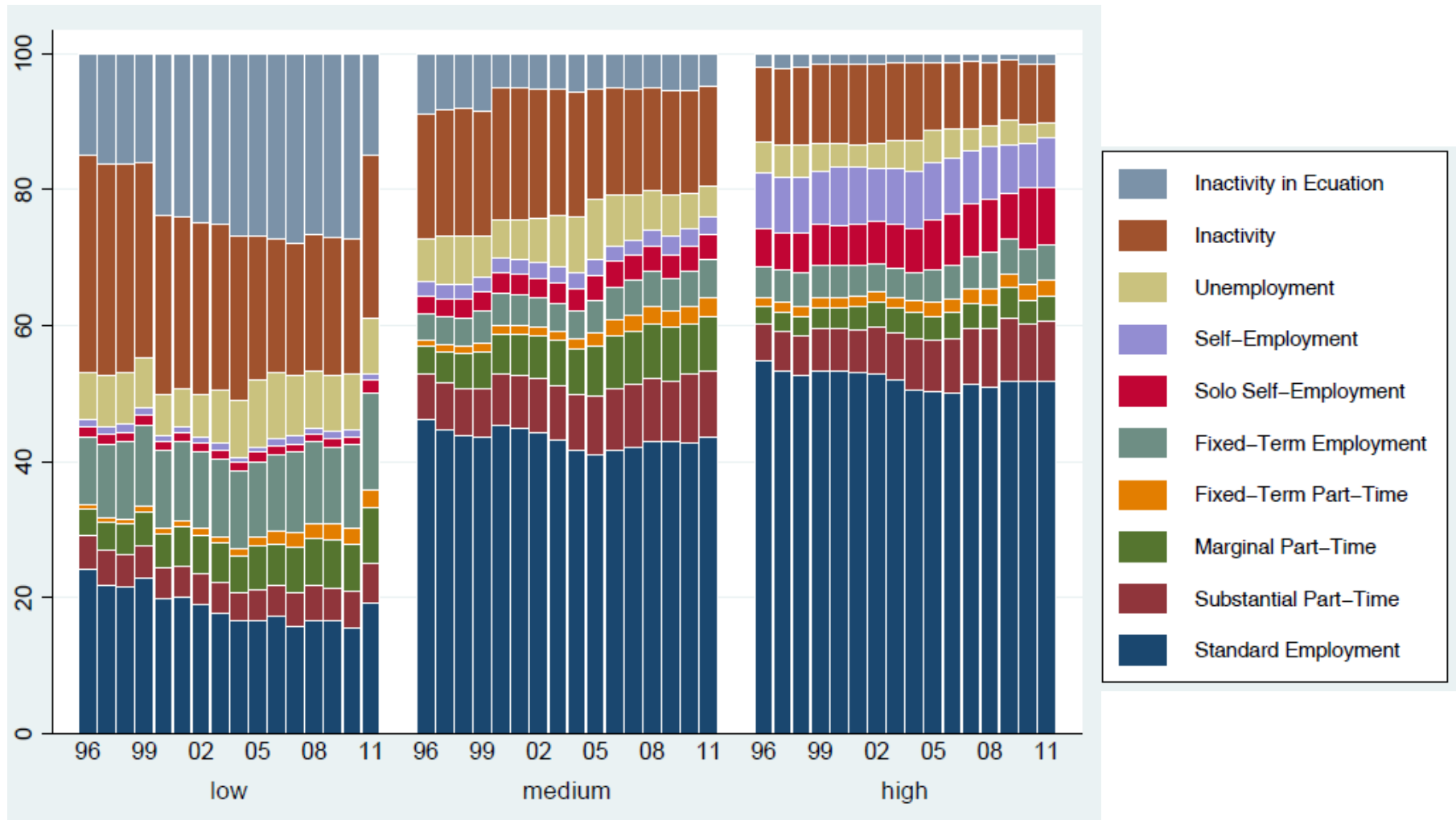
Relative employment rate of 20-64 year-old workers,
by educational attainment, 2012
(in percentage points)



Source: Eurostat-Online 2014, EU Labour Force Survey (EU-LFS).

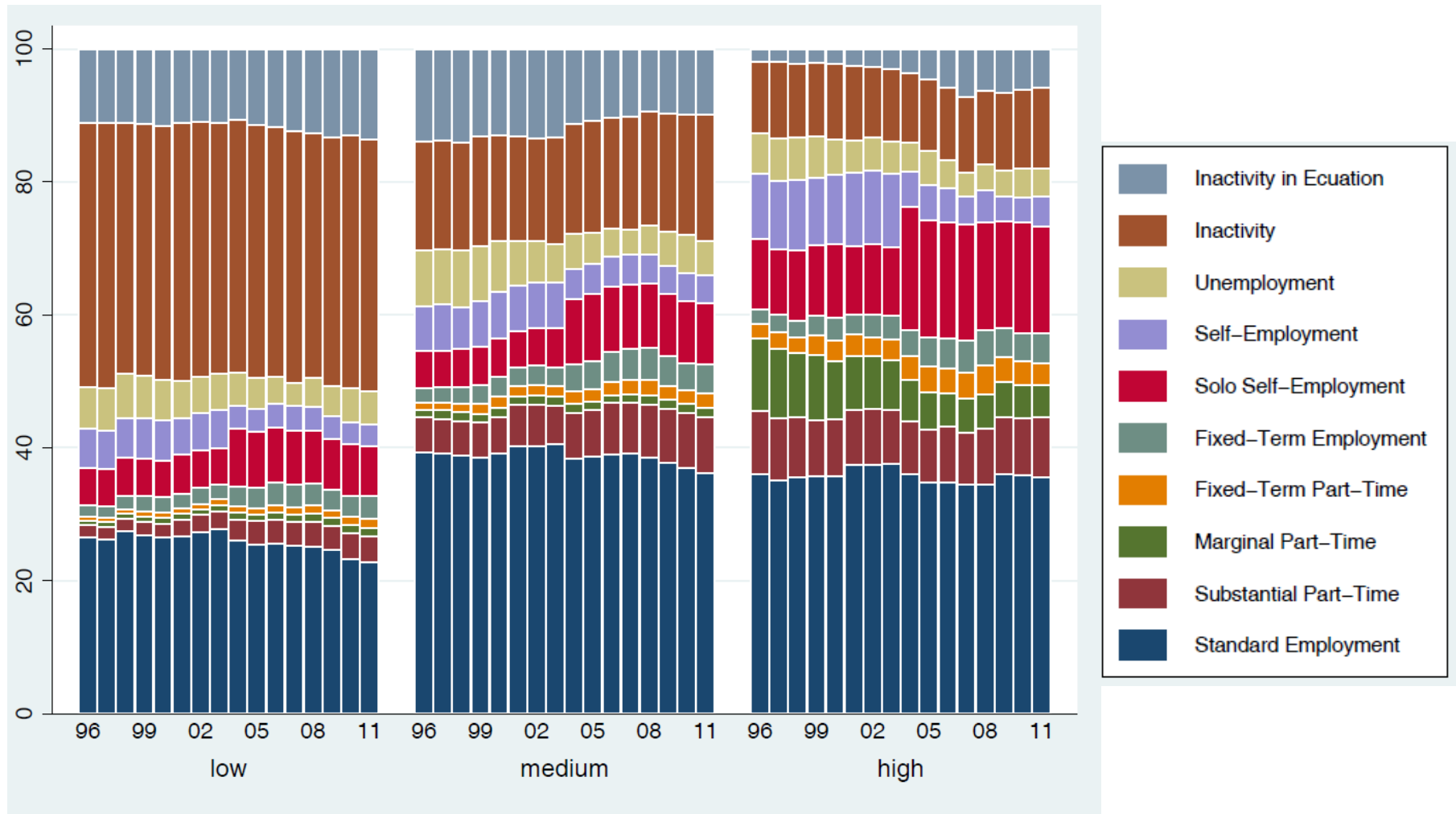


Employment in Germany, by education, 1996-2011 (in percent)



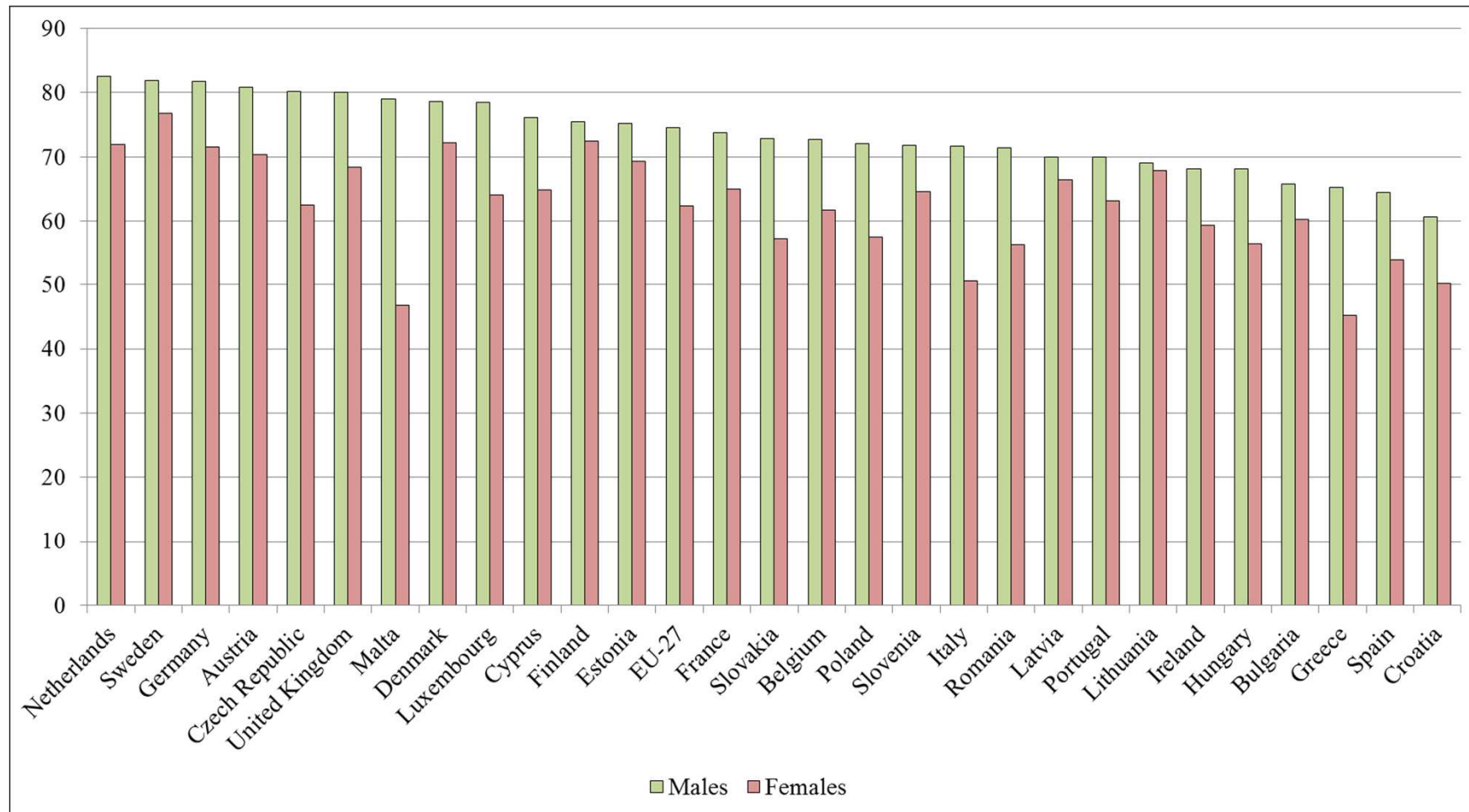


Employment in Italy, by education, 1996-2011 (in percent)





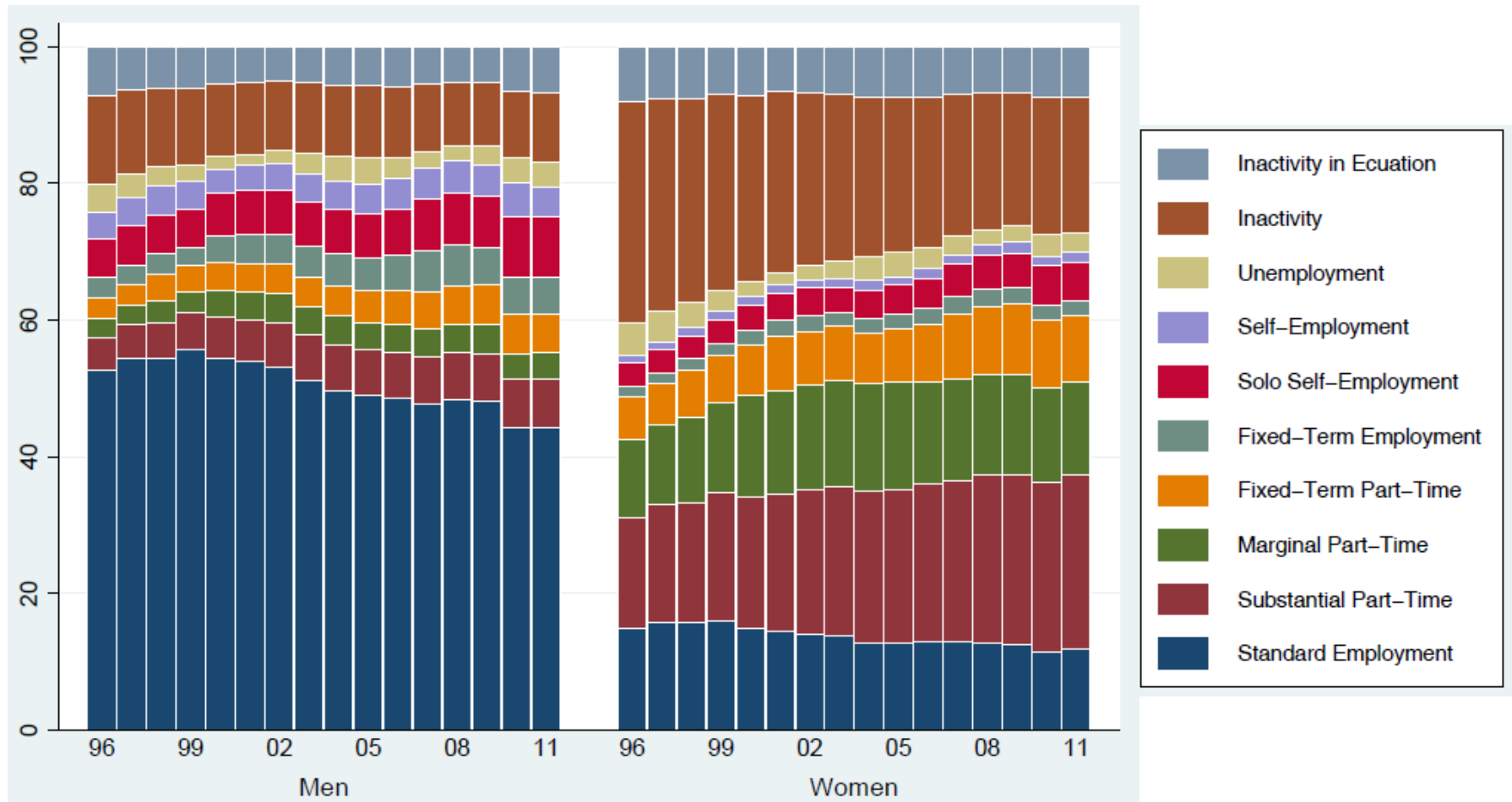
Employment rate of 20-64-year-olds, by gender, 2012
(in percent)



Source: Eurostat-Online 2014, EU Labour Force Survey (EU-LFS).

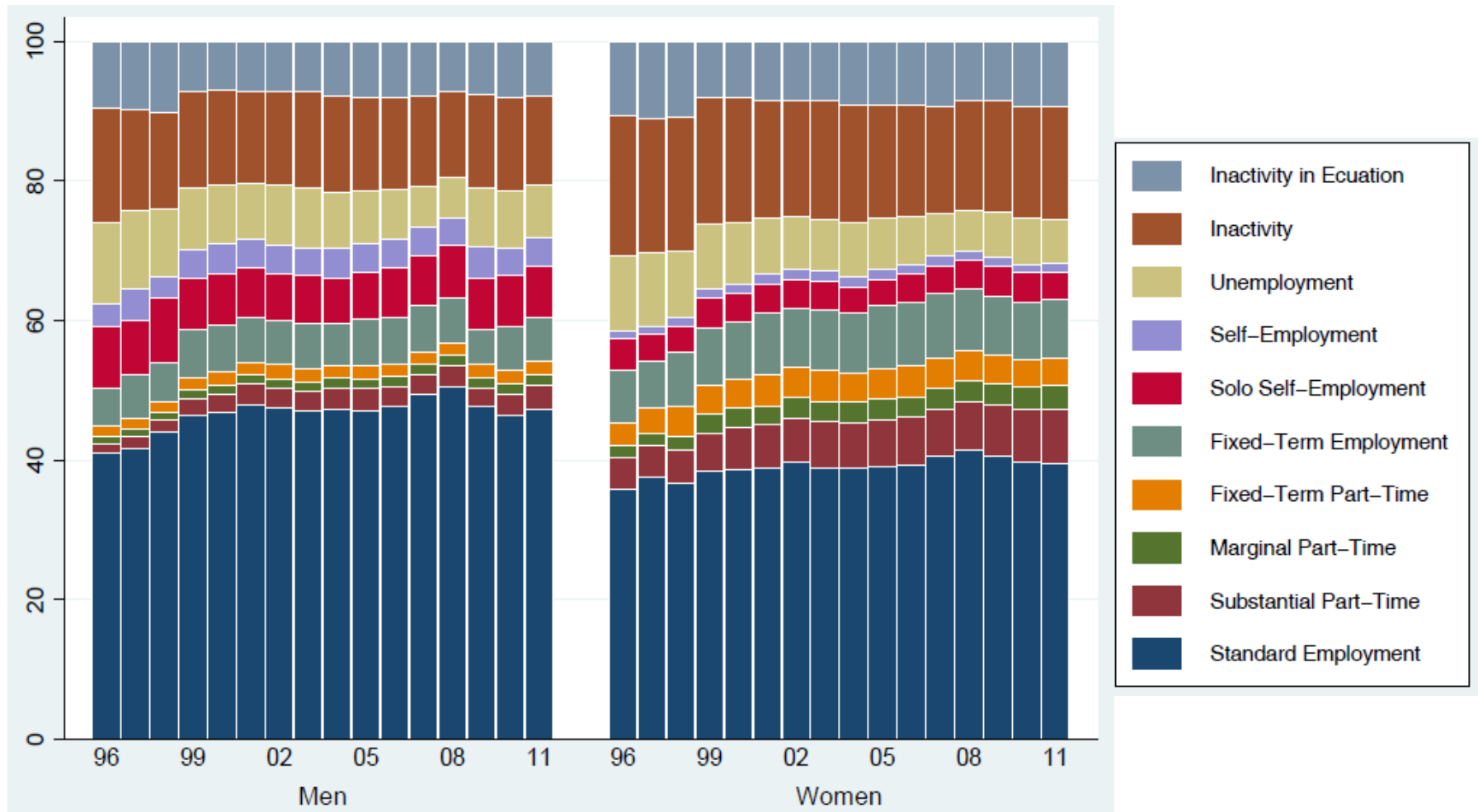


Employment in the Netherlands, by gender, 1996-2011 (in percent)





Employment in Finland, by gender, 1996-2011 (in percent)

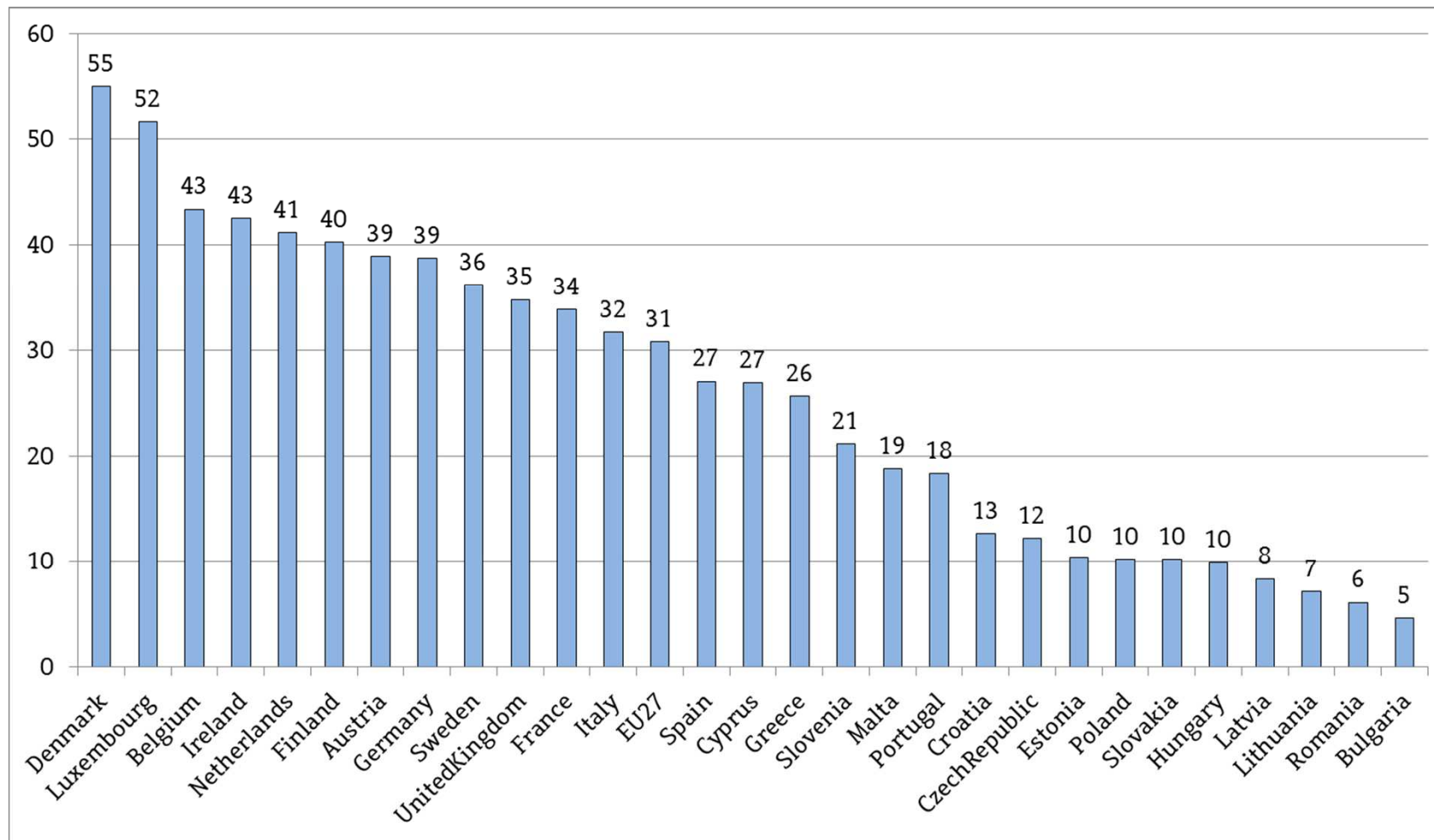




III. Income



Mean annual gross earnings, 2010
(in Thousands)

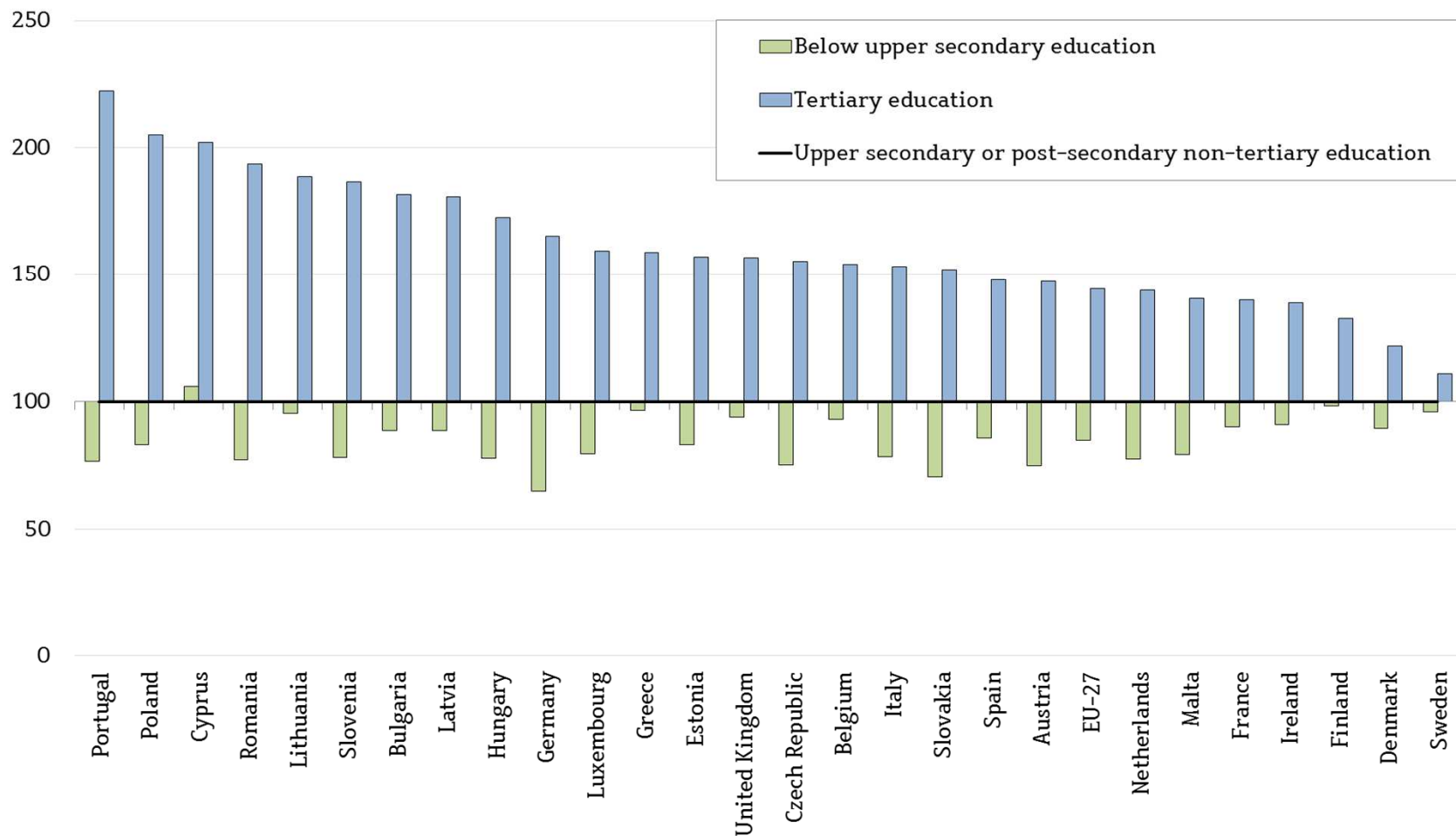


Source: Eurostat-Online 2014, Structure of earnings survey (SES).

Note: Data refer to enterprises with 10 employees or more and to NACE Rev.2 sections B to S excluding O.



Relative hourly earnings of 25-64 year-old workers, by educational attainment, 2010 (in percentage points)

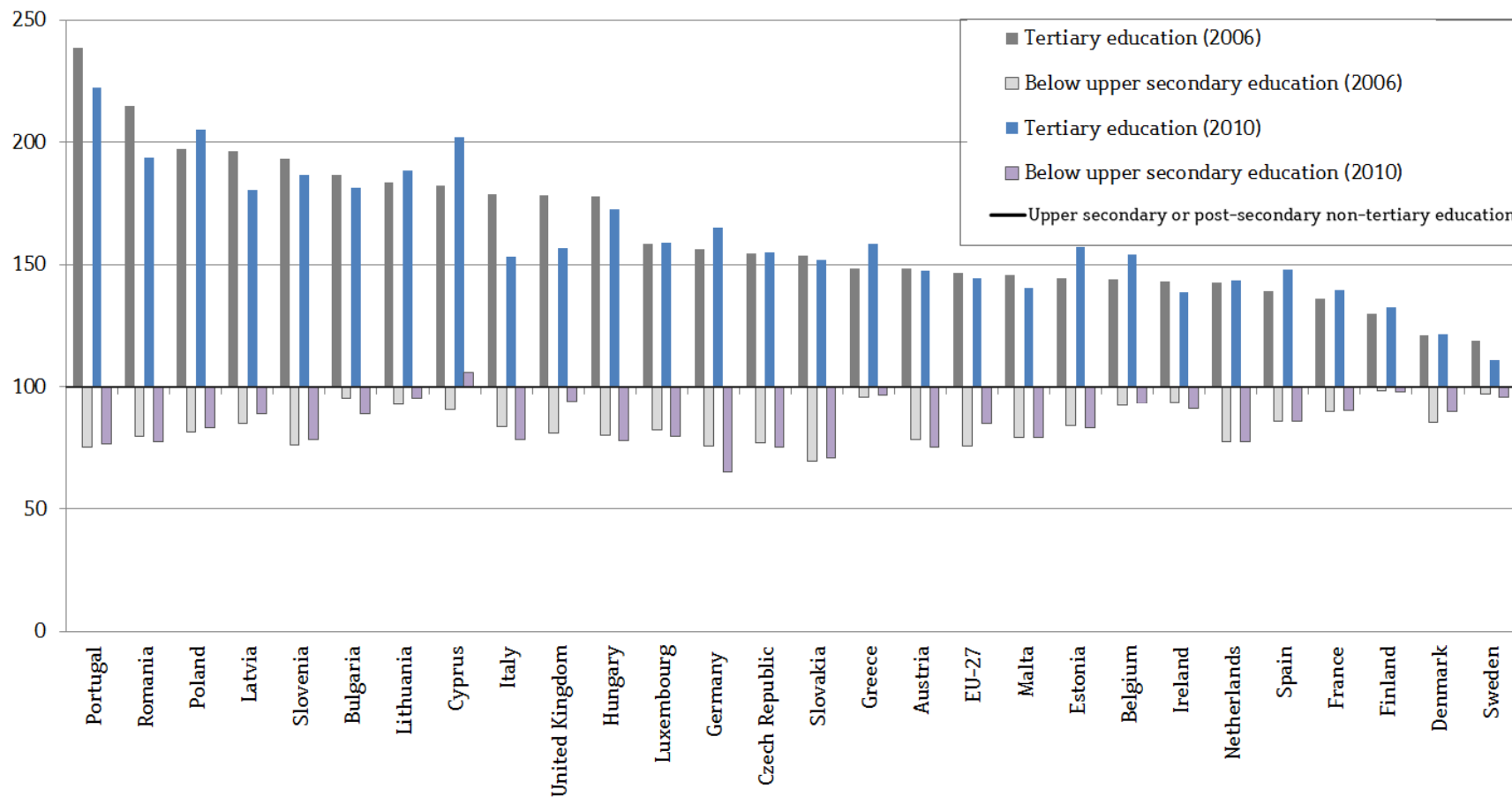


Source: Eurostat-Online 2014, Structure of earnings survey (SES).

Note: Data refer to enterprises with 10 employees or more and to NACE Rev.2 sections B to S excluding O.



Relative hourly earnings of 25-64 year-old workers, by educational attainment, 2006 and 2010 (in percentage points)

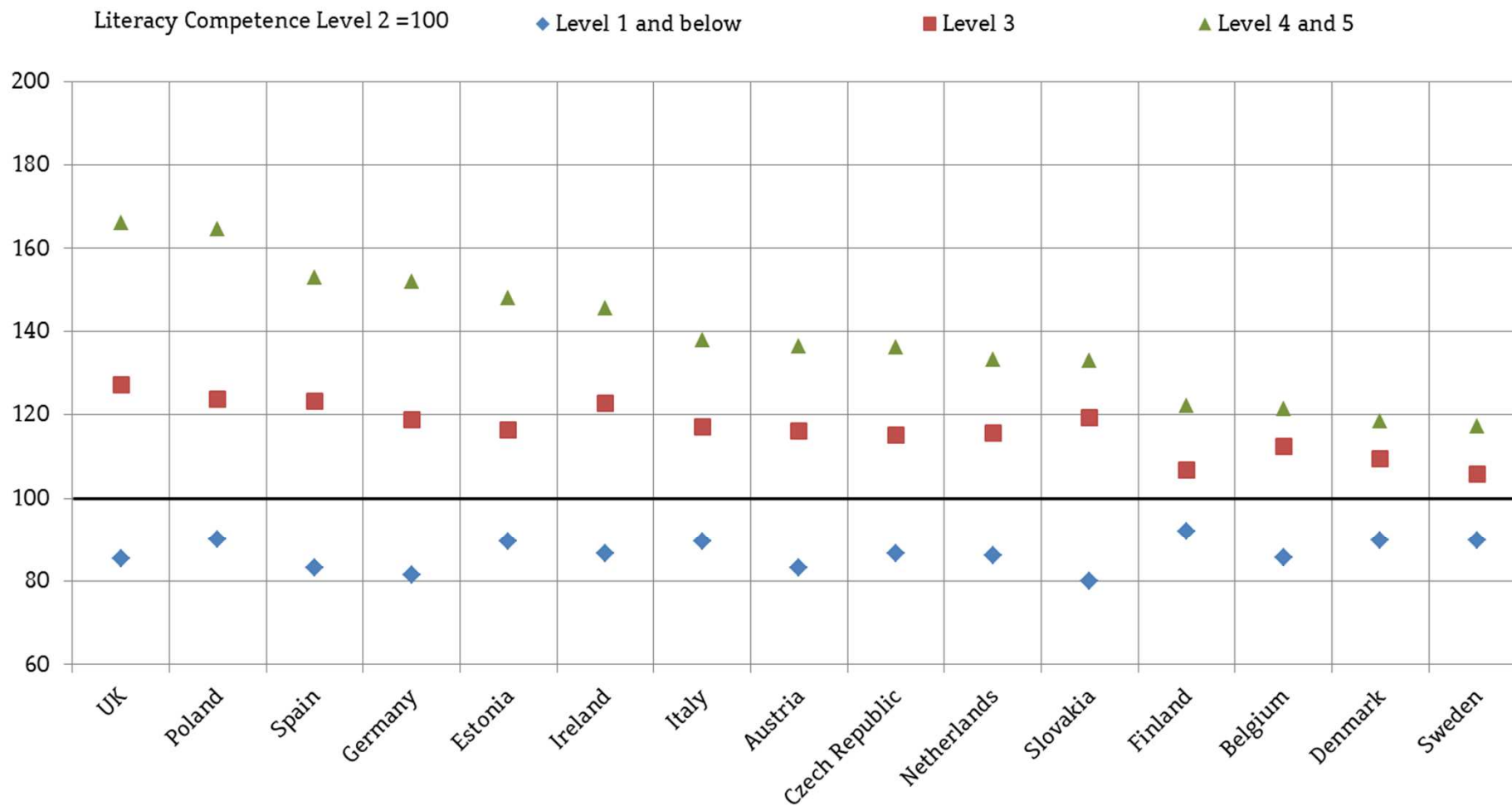


Source: Eurostat-Online 2014, Structure of earnings survey (SES).

Note: Data refer to enterprises with 10 employees or more and to NACE Rev.2 sections B to S excluding O.

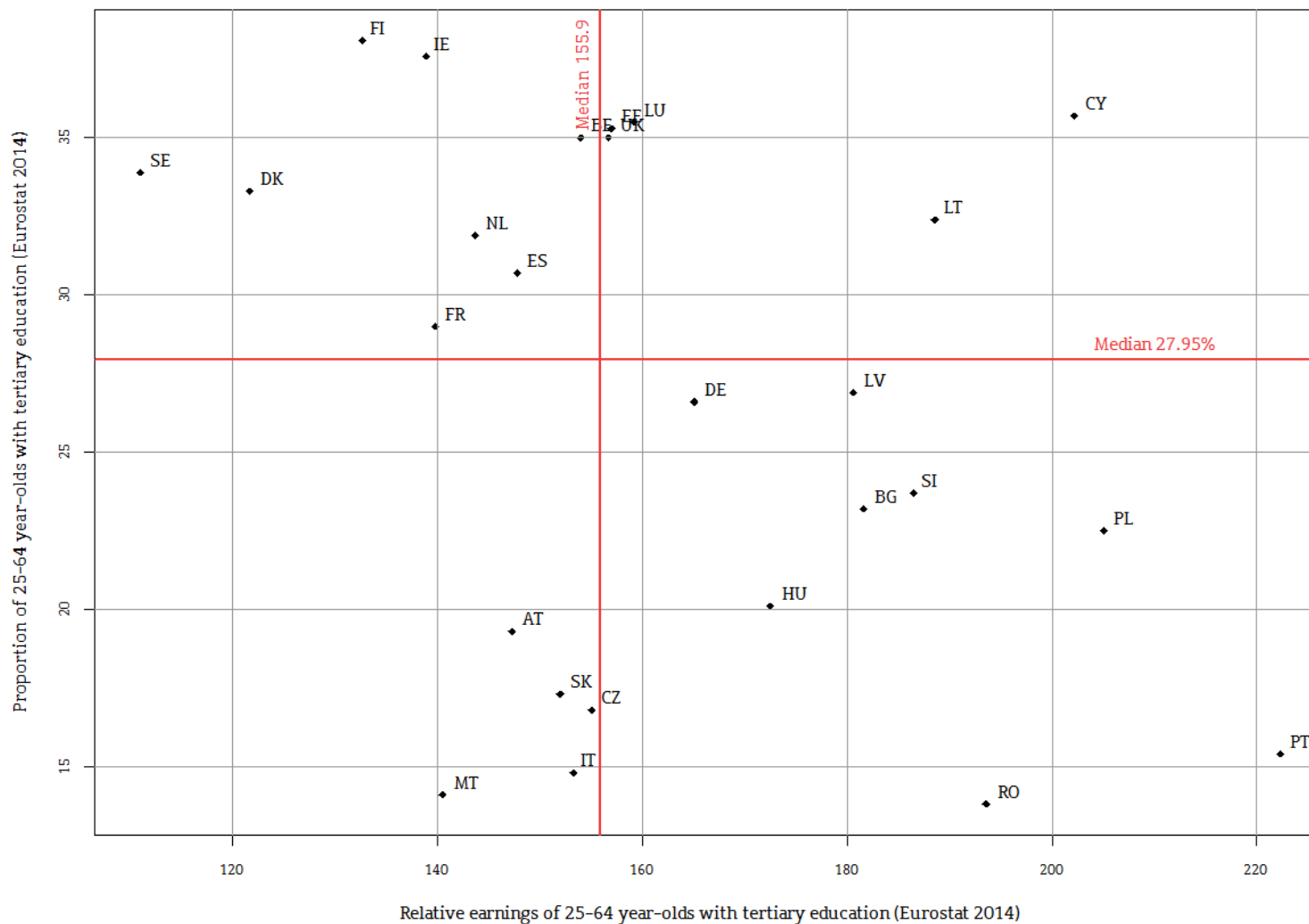


Relative hourly earnings, by PIAAC literacy competences, 2011 (in percentage points)





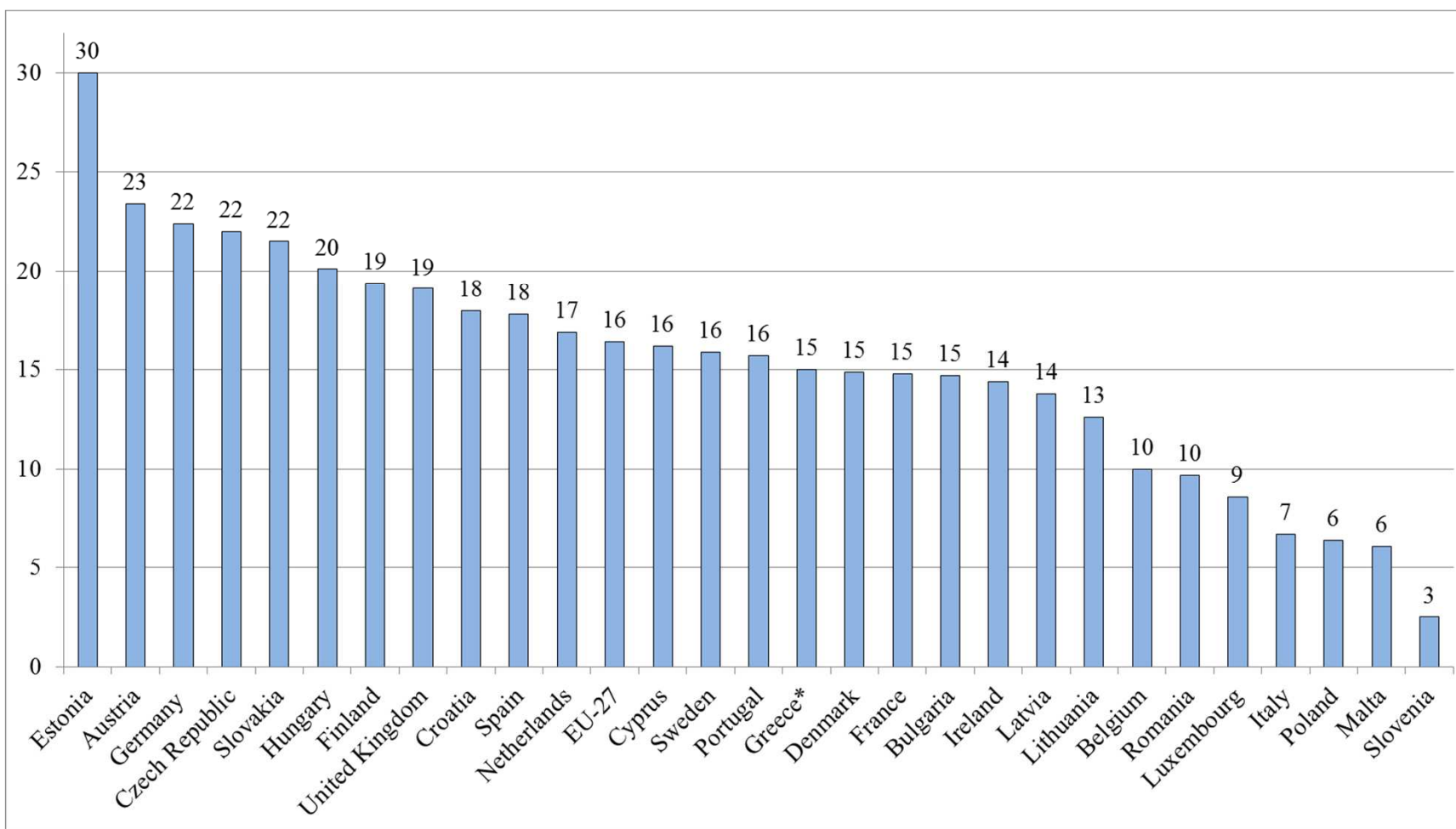
Relative earnings and share of 25-64 year-olds with tertiary education in Europe, 2010



Sources: Proportion of tertiary educated: Eurostat-Online 2014, EU Labour Force Survey (EU-LFS).
Relative earnings of tertiary educated: Eurostat-Online 2014, Structure of Earnings Survey (SES).



Gender pay gap in unadjusted form, 2012 (in percent)



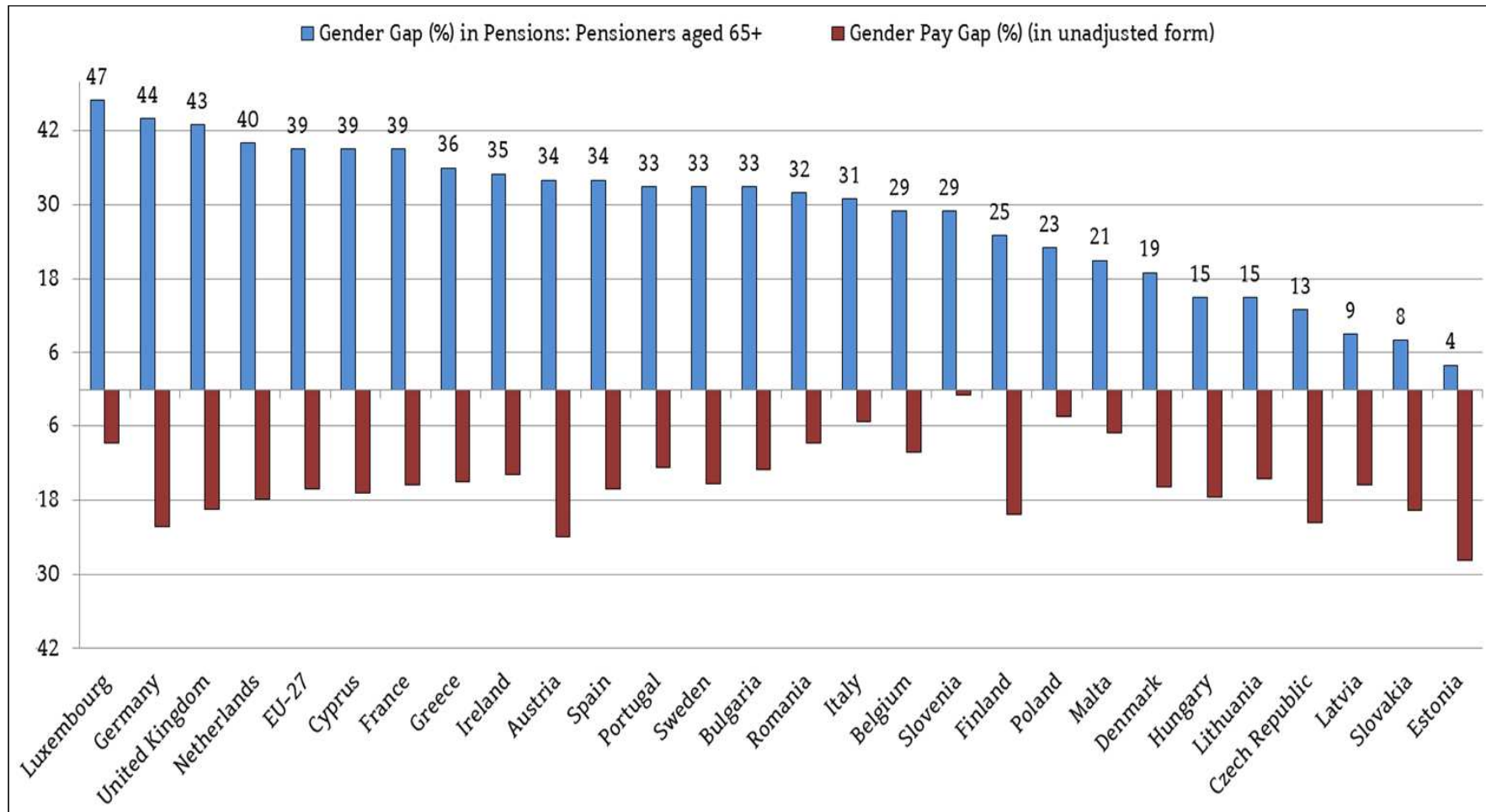
Source: Eurostat-Online 2014, Structure of earnings survey (SES).

Note: Data refer to enterprises with 10 employees or more and to NACE Rev.2 sections B to S excluding O.

* Greece refers to 2010 data



Gender gap in pensions and gender pay gap, pensioners over 65 years, 2010 (in percent)



Source: Eurostat–Online 2014, Structure of earnings survey (SES).

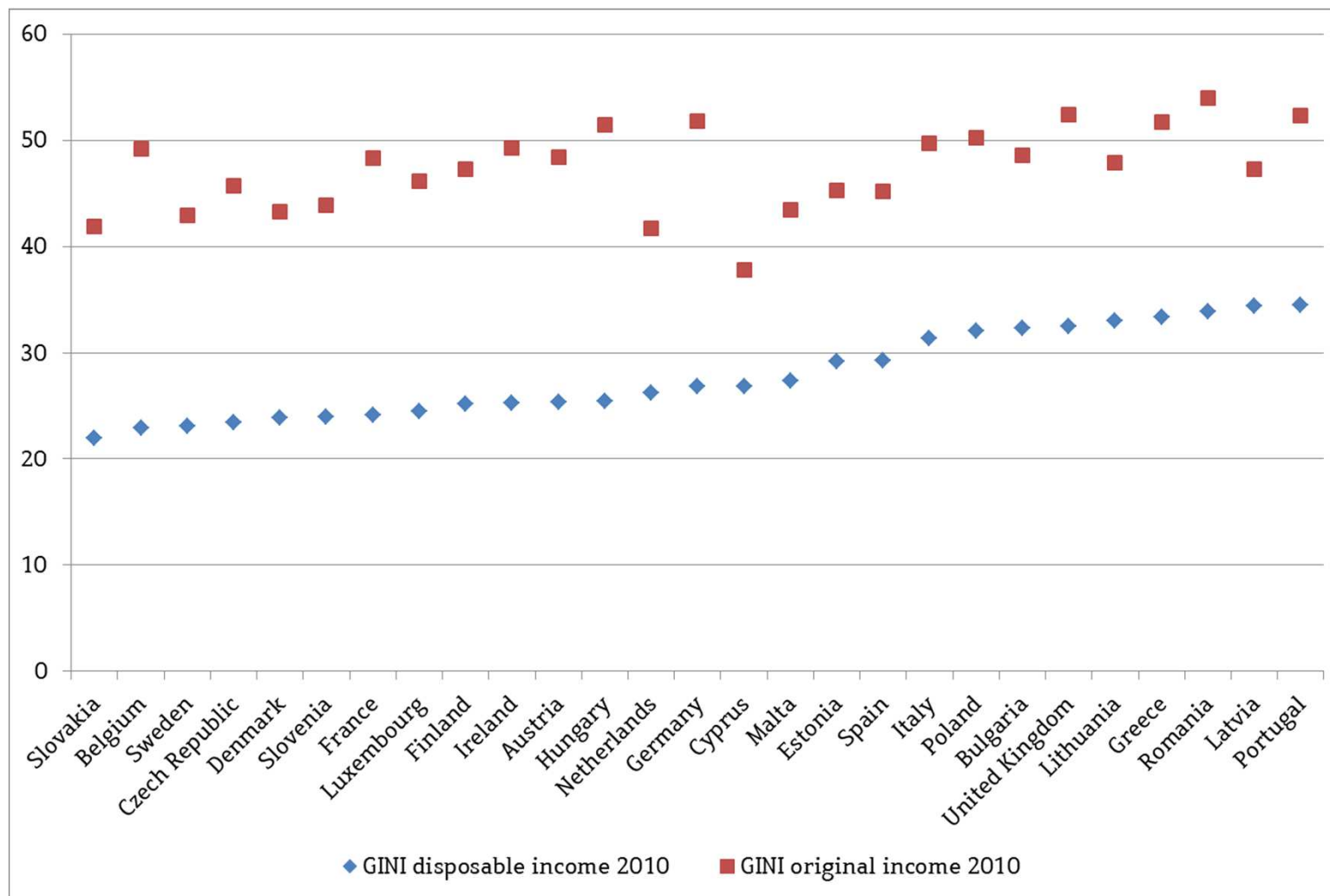
Note: Data refer to enterprises with 10 employees or more and to NACE Rev.2 sections B to S excluding O.



IV.
Financial Inequality,
At-risk-of-Poverty
and Deprivation



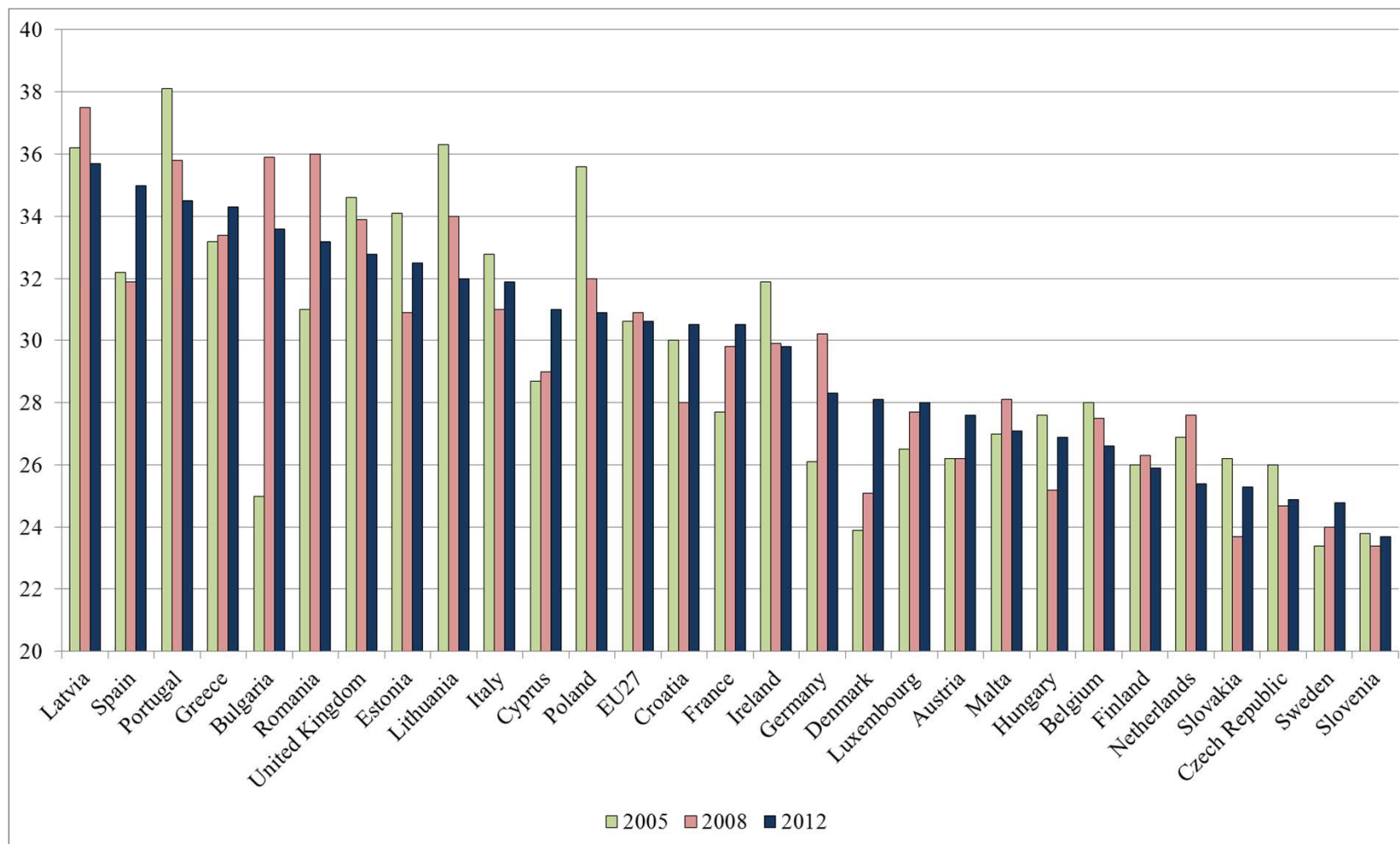
Gini coefficients before and after taxes and transfers, 2010
(Gini scale from 0 to 100)



Source: EUROMOD statistics on distribution and decomposition of disposable income, accessed at <http://www.iser.essex.ac.uk/euromod/statistics/> using EUROMOD version no. F6.0+.



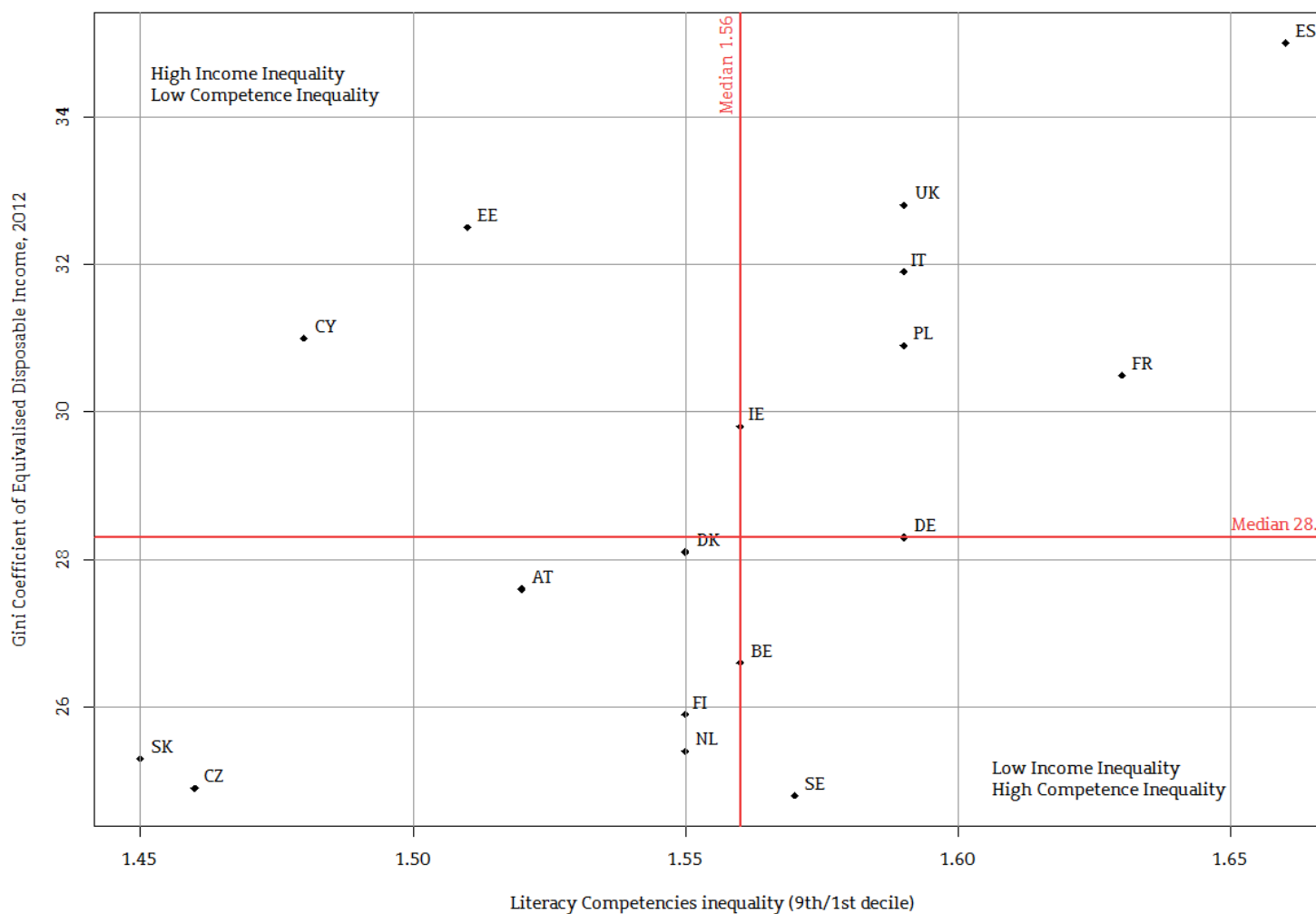
Change in Gini coefficient of equivalised disposable income, 2005 and 2012 (Gini scale from 0 to 100)



Source: Eurostat-Online 2014, Survey of Income and Living Conditions (EU-SILC).



Financial and educational inequality, 2012 (Gini scale from 0 to 100)

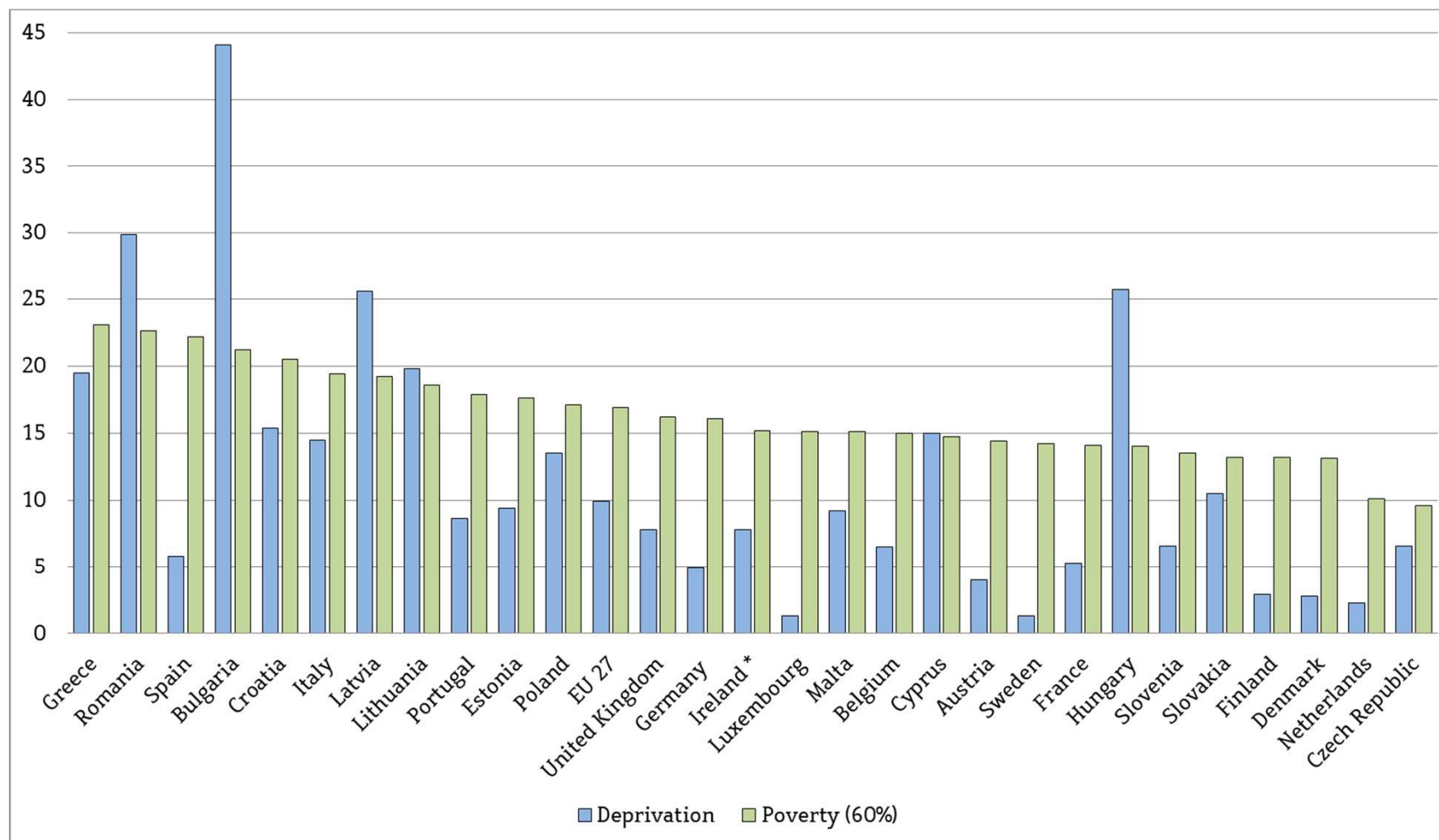


Sources: Literacy Competencies inequality (9th/1st decile): OECD, PIAAC 2012 Database.

Gini coefficient of equivalised disposable income: Eurostat-Online 2014, Survey of Income and Living Conditions (EU-SILC).



National material deprivation rates and at-risk-of-poverty rates, 2012 (in percent)

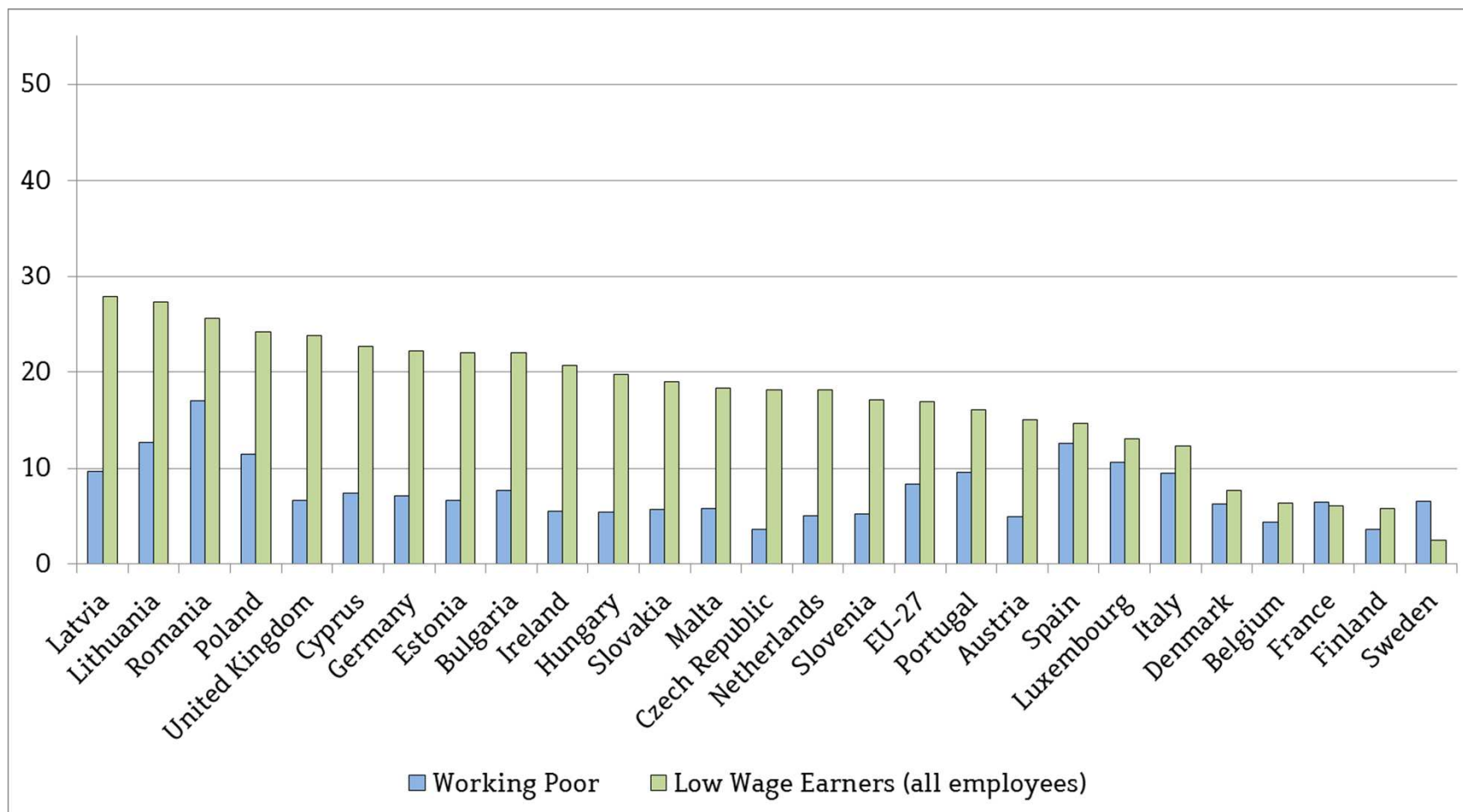


Source: Eurostat-Online 2014, Survey of Income and Living Conditions (EU-SILC).

Note: *Poverty and deprivation rate of Ireland refers to 2011 data.



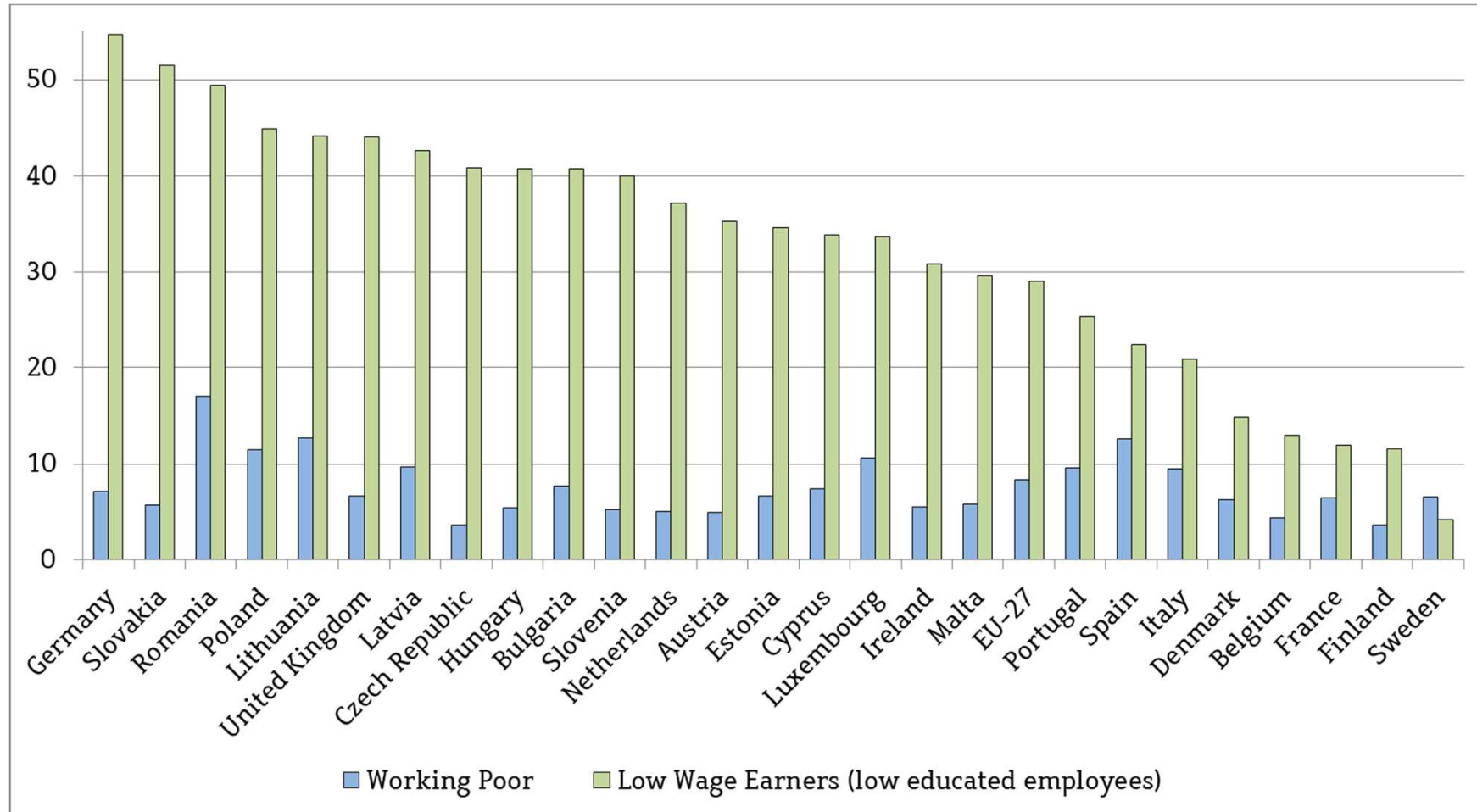
Proportion of Low-Wage Earners (all employees)
and Working Poor, 2010
(in percent)



Sources: Proportion of Low Wage Earners: Eurostat-Online 2014, SES.
Working Poor: Eurostat-Online 2014, EU-SILC.



Proportion of Low-Wage Earners (low educated employees) and Working Poor, 2010
(in percent)



Source: Proportion of Low Wage Earners: Eurostat-Online 2014, SES.
Working Poor: Eurostat-Online 2014, EU-SILC.

WZB

Berlin Social Science Center



Thank you for your attention

Ευχαριστώ πολύ

Jutta Allmendinger